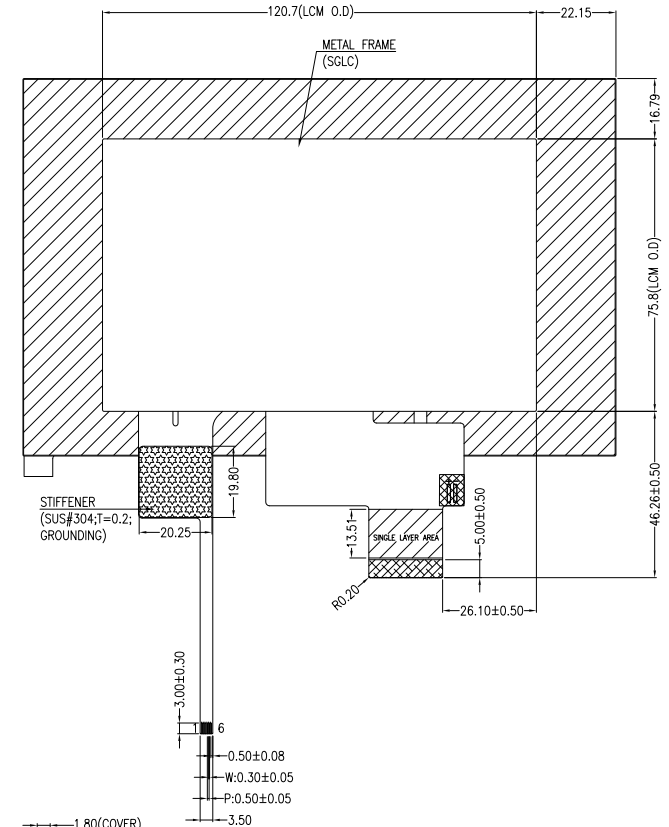
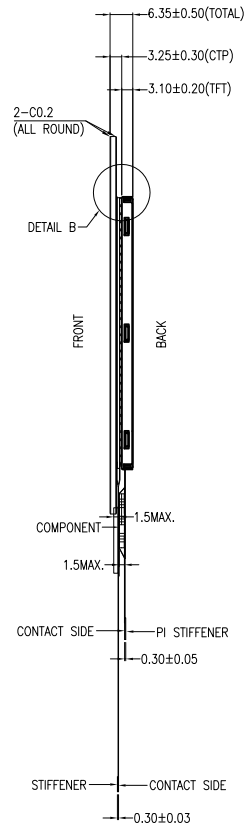
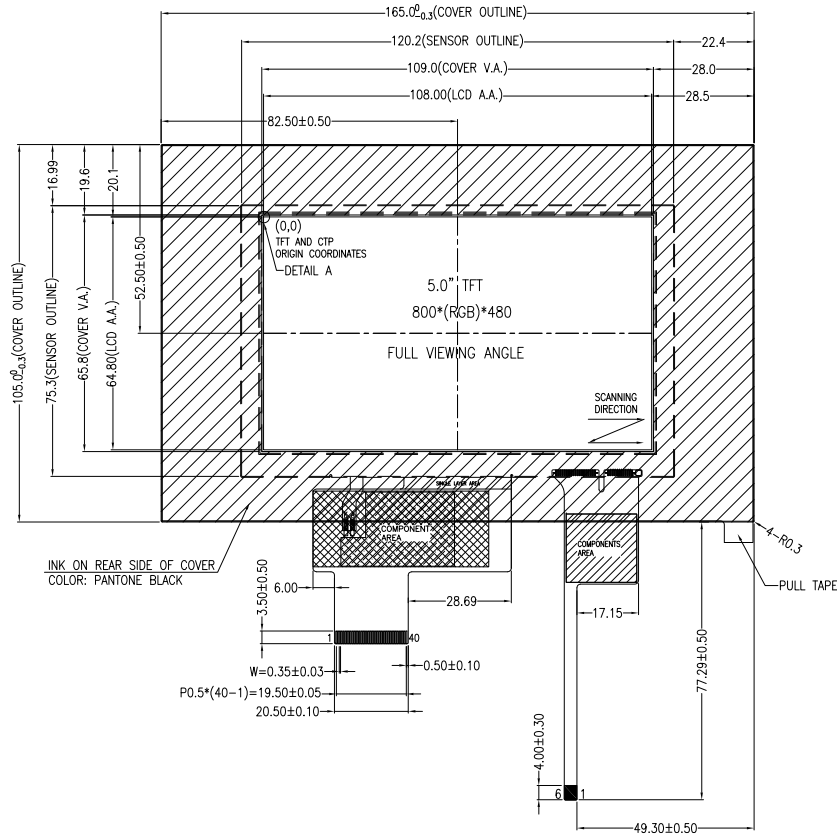


NO MECHANICAL HOUSING TO HOLD THE TFT AND THE TOUCH PANEL ON THIS PRODUCT, SO THE END USER'S MECHANICAL DESIGN MUST INCLUDE A HOUSING FOR PREVENTING THE SEPARATION OF THE TFT AND THE TOUCH PANEL.



TFT PIN DESCRIPTION	
PIN	SYMBOL
1	NC
2	VDD
3	VDD
4	NC(VDDI)
5	RESET
6	STBYB
7	GND
8	RXIN0-
9	RXIN0+
10	GND
11	RXIN1-
12	RXIN1+
13	GND
14	RXIN2-
15	RXIN2+
16	GND
17	RXCLK-
18	RXCLK+
19	GND
20	RXIN3-
21	RXIN3+
22	GND
23	NC
24	NC
25	GND
26	NC
27	NC
28	SELB
29	NC
30	GND
31	LED_K
32	LED_K
33	L/R
34	U/D
35	NC
36	NC
37	NC
38	NC
39	LED_A
40	LED_A

CTP PIN DESCRIPTION	
PIN	SYMBOL
1	RST
2	INT
3	SDA
4	SCL
5	GND
6	VCC

NOTE FOR TFT:

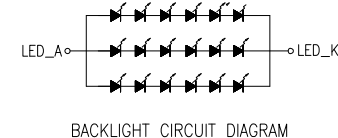
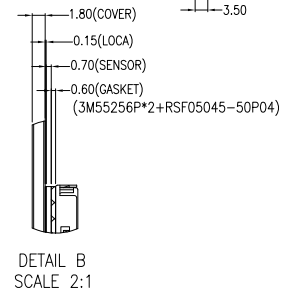
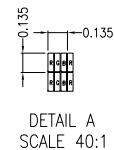
1. DISPLAY TYPE: TFT, TRANSMISSIVE, NORMALLY BLACK
2. OPERATING VOLTAGE: VDD=3.3V(TYP.)
3. VIEWING DIRECTION: FULL VIEWING ANGLE
4. DRIVER IC: ST7262-C4-1-H6
5. LED BACKLIGHT: 18-CHIP WHITE LED, If=60mA, Vf=19.2±1.2V
6. TOP POLARIZER SURFACE TREATMENT: ANTI-GLARE
7. RECOMMEND MATCHING CONNECTOR: FH28-40S-0.5SH OR EQUIVALENT

NOTE FOR CTP:

1. 5.0 INCH PROJECTIVE CAPACITIVE TOUCH PANEL
2. COVER GLASS + SENSOR GLASS + FPCA
3. OPERATING VOLTAGE: VDD=3.3V(TYP.)
4. DRIVER IC: ILI2511
5. INTERFACE: I²C
6. RESOLUTION: 800*480
7. MULTI FINGER: UP TO 10
8. HARDNESS OF COVER SURFACE: 7H(750g)
9. FIRMWARE FILE: MI0500DIP-C1_FIRMWARE_6.0.0.0.FF.5.D.1 20210611 Δ

NOTE FOR OTHERS:

1. OPERATING TEMP.: -30°C ~ 85°C Δ
2. STORAGE TEMP.: -30°C ~ 85°C Δ
3. SURFACE LUMINANCE: 510 CD/M² (TYP.) WITH CTP
4. THE SINGLE LAYER AREA OF FPC IS BENDABLE AND THE BENDING RADIUS MUST BE NOT LESS THAN 1.5MM
5. GENERAL TOLERANCE: ±0.3MM
6. ROHS COMPLIANT



MULTI-INNO TECHNOLOGY CO., LTD.

DRAWN BY:	CAROL	2021.05.31		MODULE P/N:
CHECKED BY:			SCALE : 1/1	MI0500AKT-1CP
APPROVED BY:			UNIT: mm	DESCRIPTION:
VERSION NO:	02		SHEET NO.: 1/1	TFT + CTP MODULE

VER.	REVISED DESCRIPTION	REVISER	DATE
02	ADD TERMINAL FILE CHANGE THE OPERATING AND STORAGE TEMPERATURE	CAROL	2023.06.12
01	FIRST ISSUE	CAROL	2021.05.31